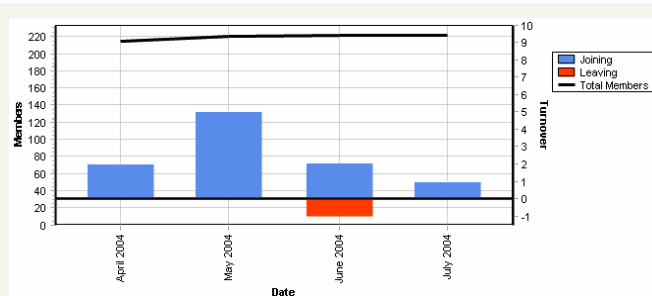


churchinsight : Reports

This article provides an introduction to just a few of the powerful reports available in **churchinsight**.

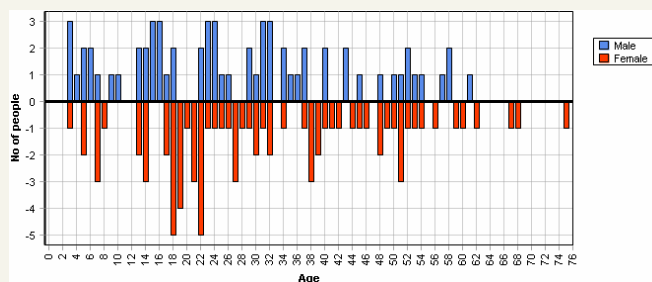
Church Management & Group Analysis Reports

Understanding the make-up of your church can be critical for a number of reasons: it helps you to allocate resources and finances, it highlights people-groups which need greater attention and it provides a greater insight into the identity of the church body. **churchinsight** provides this analysis, not just on a 'whole church' level but at every stage of every group. This means, for example, that the Sunday school leader can find out the exact distribution of ages across the classes to help make provisions for an appropriate number of helpers. The following are just a few of these reports:



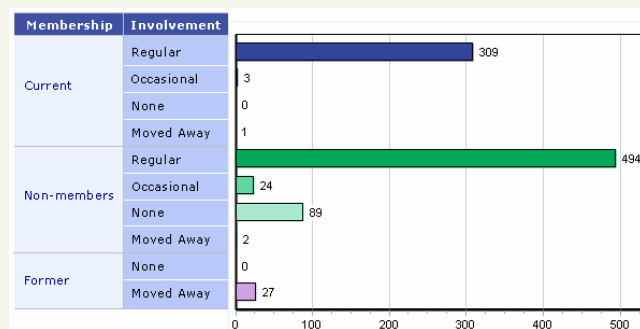
Church Membership

See how many members joined, how many left and the total membership for a given period of time. Often described as a "membership churn" report this document can give you clear information on the growth of the church as a whole.



Demographics

See the age distribution making up any of your groups, or the church as a whole. This report can be particularly useful for 'age-targeted' groups such as Sunday school, Youth groups, 20+ and pensioner groups.



Membership status

See which members of your church or group are current members, and which are regularly involved non-members. If you are planning a membership course in the near future this report can enable you to mail existing non-members at the click of a button!

N10	N10 1	Fortnum
N11	N11 1	Hamble
		Lipllett
N12	N12 8	Presley
		Treban
		Brown
	N12 9	Semji
	Rimney	
	N12 0	Ginty
N13	N13 4	Anderton
		Ronan
N14	N14 5	Chiple
	N14 6	Wandling
		Picard
N15	N15 4	Astard



Geographical

See the geographical location of the members of your church or group, helping you to make decisions about forming new small groups centred around a particular area. This can assist you to reach areas of your town or city where members are living.

Organisation Charts

An interactive set of reports illustrating the structural make up of your church. In addition to the group names you can also include leader names and/or group member names.

The advantage of these reports is that they are not just an overview; you can also expand on one particular aspect of a report to discover more information behind the 'figures'. For example, you can click on the demographic chart to see exactly which people are a particular age. You can even use this information to form a mailing using the **churchinsight mail centre!**

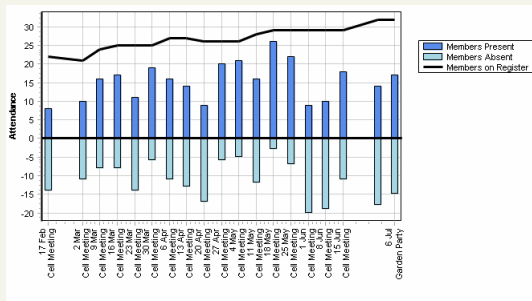
Attendance Reports

The progress of your cell/small groups can often be difficult to measure - which is your fastest growing group? How well attended are the meetings? How are the groups performing as a whole? The **attendance reports** in **churchinsight** provides a unique insight into the running of your small groups, enabling you to focus your resources where they are most needed. Critically, each small group leader can be given limited security permissions to enter the attendance data themselves - ensuring that there is no increased administration for the church office!

	13 Apr 2004 Cell Meeting	20 Apr 2004 Cell Meeting	27 Apr 2004 Cell Meeting	4 May 2004 Cell Meeting	11 May 2004 Cell Meeting	18 May 2004 Cell Meeting	25 May 2004 Cell Meeting
Joe Dean	✓	✓	✓	✓	✓	✓	✓
Mary Dean	✓	✓	✓	✓	✓	✓	✓
Hannah Sowell	✗	✗	✗	✓	✓	✗	✓
Wilma Burmes	✗	✗	✗	✓	✗	✗	✗
John Gracia	✓	✗	✗	✓	✓	✓	✓
Daniel Larodie	✓	✓	✓	✓	✓	✓	✗
Margie Schae	✓	✓	✓	✗	✓	✓	✗
Brian Amerson	✓	✓	✗	✗	✗	✓	✗
Justin August	✓	✗	✓	✗	✗	✓	✗
Jeff Messenger	✓	✓	✓	✓	✗	✓	✓

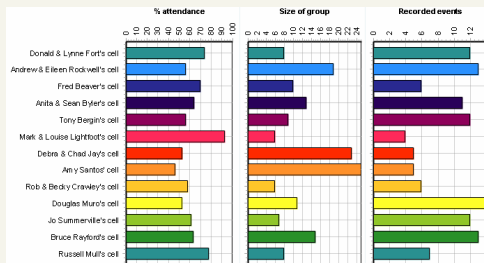
Attendance Register

See at a glance which members regularly attend and which members occasionally attend your meetings.



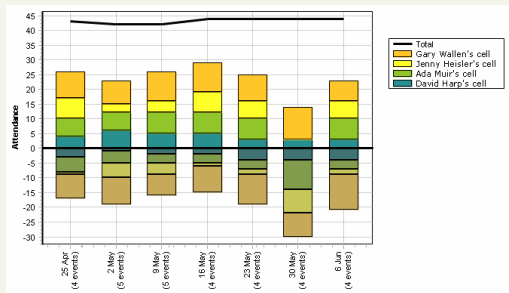
Group Attendance

An illustration of the attendance register above, this report is invaluable in showing both group growth over time and attendance trends. Click on a bar of the chart to see the names of individuals.



Attendance Summary

Allows group overseers and church leaders to see at a glance the average attendance, size of group and number of events for all the groups they are responsible for.



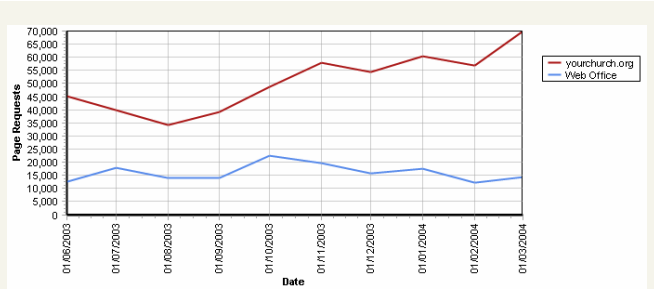
Attendance Chart

Allows group overseers and church leaders to track attendance trends and group size over a specific period of time for all the groups they are responsible for.

As with the church management reports, many of these reports feature an information "drill-down" enabling you to analyse the data still further. For example, you can click on the attendance chart to see attendance trends for just one of the groups you are responsible for, and from there click on one of the bars in the attendance chart to see which members were present or absent on that date.

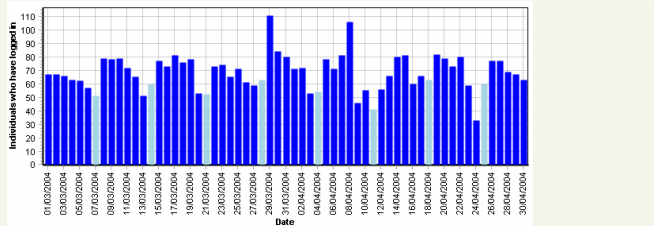
Web Site Reports

As with any web site, you will want to know how successful you have been in reaching both your members and your visitors. **churchinsight** can provide information on how many of your members have been using the web site, the amount of activity and popularity of different areas in the following reports:



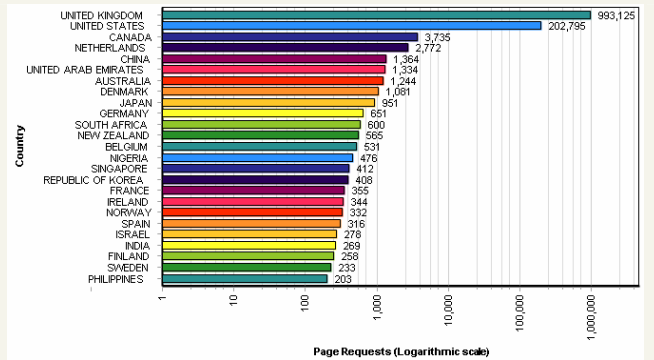
Page Requests

See how many page requests have been served by day, week or month over a specified period of time.



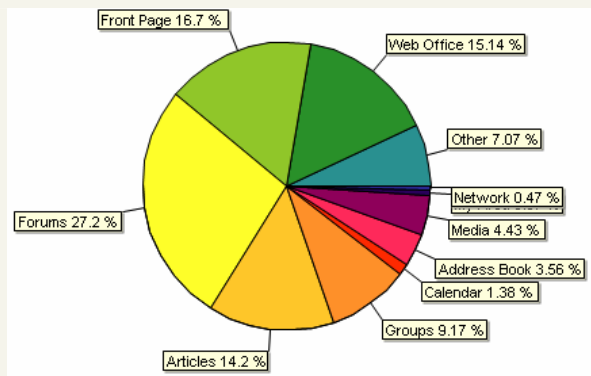
Logins per day

See how many of your registered members are logging into the web site on a day to day basis. 'Drill down' by clicking on any bar to find out which members logged on.



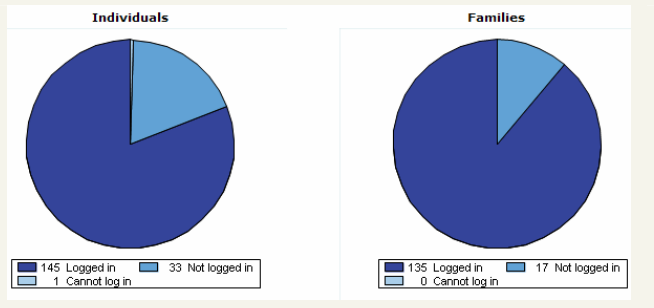
Visitors by Country

Why not find out which countries your web ministry is reaching? This report shows where the visitors to your site originate from – often from surprising locations!



Web Site Page Proportions

See at a glance which areas of the web site are most popular.



Login Statistics

See what proportion of your group (or the church as a whole) have accessed the web site so far. 'Drill down' by clicking on any portion of the pie chart to find out which members of the group have and haven't logged on yet.